



NZX Limited - Monthly Shareholder Metrics

November 2017

These Shareholder Metrics represent the key features of NZX's operations in each of its core businesses. The Metrics focus on what drives the revenue performance of NZX, so as to give a consistent and transparent comparison across time periods for each business line.

Markets

NZX Listed Issuers			Nov 2017	Change YoY
Total Equity Securities	160	-5.9%		
Total Listed Debt Securities	115	8.5%		
Total Other Securities	25	-7.4%		
Total Listed Securities	300	-1.0%		
Total NZX Main Board Issuers	158	-5.4%		
Total NZAX Issuers	17	-5.6%		
Total NXT Issuers	3	-25.0%		
Total NZDX Issuers	45	4.7%		

Capital Raising			Nov 2017	YTD
New Capital Listed				
IPOs and Compliance Listings	\$0.00 b	\$0.48 b		
New Debt Listings	\$0.20 b	\$2.97 b		
Secondary Capital Raisings				
Total Capital Raised By All Issuers	\$275 m	\$3,626 m		
Total Equity Raised - Primary Issuers	\$141 m	\$1,115 m		
Total Equity Raised - Dual & Secondary Issuers	\$1 m	\$1,353 m		
Total Debt Raised	\$133 m	\$1,158 m		
Number of Capital Raising Events	17	160		
Capital Raised < \$0.5m	3	25		
Capital Raised > \$0.5m < \$10m	7	73		
Capital Raised > \$10m < \$100m	7	59		
Capital Raised > \$100m	0	3		

Market Capitalisation	Nov 2017	Change YoY	% of GDP
All Equity	\$131.2 b	13.4%	48.5%
All Debt	\$27.3 b	8.1%	10.1%

NZX Indices Performance			Nov 2017	Change YoY
S&P/NZX 50 Index	8,187	18.7%		
S&P/NZX 50 Portfolio Index	5,114	20.7%		
S&P/NZX A-Grade Bond Index	5,140	5.1%		
S&P/NZX All Swap Index	202	3.9%		

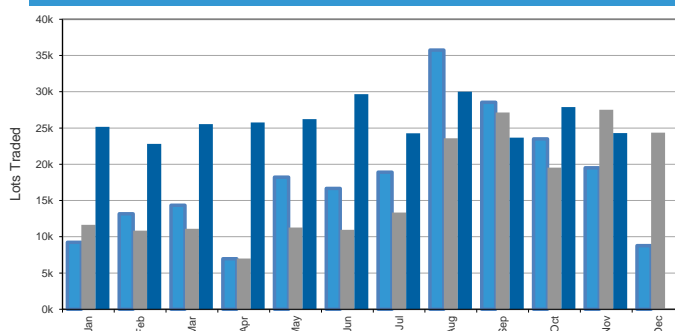
Cash Market Trading			Nov 2017	Change YoY
Total Trades	217,153	46.5%		
Daily Average Trades	9,871	46.5%		
Total Trades < \$50k	205,155	49.6%		
Total Value Traded	\$5.6 b	43.1%		
Daily Average Value Traded	\$254 m	43.1%		
Total Equity Transactions				
Total Trades	214,110	48.7%		
Value Traded	\$5.4 b	47.3%		
Total Debt Transactions				
Total Trades	3,043	-27.2%		
Value Traded	\$141 m	-31.3%		
Cumulative Numbers - YTD				
Number of Trades	1,879,139	15.1%		
Total Value Traded	\$41.0 b	0.0%		
Clearing House / Depository				
Gross Value of Cleared Trades over Month	\$5.7 b	42.4%		
Collateral Held At Month End	\$44.7 m	10.3%		
Depository transactions	3,314	30.8%		
Assets under custody in depository	\$463 m	25.9%		
Value of stock lent over month	\$569 m	231.0%		
Wholesale Data				
Terminal Numbers - Professional*	6,074	-2.7%		
Terminal Numbers - Retail*	1,267	0.8%		
Licences - Value > \$20k pa	34	21.4%		
Licences - Value < \$20k pa	63	0.0%		

* 3 month average

Direct Data Products			Nov 2017	Change YoY
Proprietary Security Subscription Products	405	1.5%		
- Products ≥ \$3,000 p.a	159	5.3%		
- Products < \$3,000 p.a.	246	-0.8%		

Derivatives	Nov 2017	Change YoY
Futures - Total Lots Traded	21,342	-8.9%
Options - Total Lots Traded	2,950	-28.0%
Open Interest	49,198	4.7%

Derivatives Total Lots Traded 2015 / 2016 / 2017



Energy Contracts	Nov 2017
Operating / Technology Contracts	17
- Contracts > = \$500k p.a.	4
- Contracts < \$500k p.a.	13

Funds Services

SuperLife	Nov 2017	Change YoY
Funds Under Management - KiwiSaver	\$736 m	25.5%
Funds Under Management - Other	\$1,229 m	17.7%
Total	\$1,965 m	20.5%

Smartshares	Nov 2017	Change YoY
Funds Under Management - External	\$667 m	40.2%
Funds Under Management - SuperLife funds	\$1,429 m	19.9%
Total	\$2,096 m	25.7%
Units on Issue	866 m	12.5%

NZX Wealth Technologies	Nov 2017	Change YoY
Funds Under Administration	\$1,175 m	-7.6%
Renamed from Apteryx		

Agri

Direct Data Products	Nov 2017	Change YoY
Subscriptions - NZ Agri Data Products	3,102	27.0%
Subscription - Australian Agri Data Products	1,515	-3.1%
Total Paid Advertising Page Equivalents*	190	51.0%
Total Paid Advertising Page Equivalents YTD*	1,096	-42.0%

* Total paid advertising page equivalents relates to Farmers Weekly only.

Notes

1. All figures are measured at the end of the last trading day of the month unless otherwise stated. Change refers to the change since the same period last year unless otherwise stated i.e. Change YoY is change versus the same period last year.
2. All Equity Market Capitalisation includes all securities quoted on the NZX Main Board, NZX Alternative Market and NXT Market.
3. Market Capitalisation for the NZX Debt market is the total nominal (face) value of all quoted securities excluding New Zealand Government Stock.
4. NZX Limited wishes to remind readers that the above operational statistics are based on the Group's internal records, which are unaudited. Differences may arise between this data and that disclosed in subsequent audited financial statements.

To enquire about NZX products or services, please contact: NZX Data on +64-4-471 4390
or email: data@nzx.com

To enquire about information listed on this sheet, please email cds@nzx.com